

## Economy – Claimant count unemployment rate

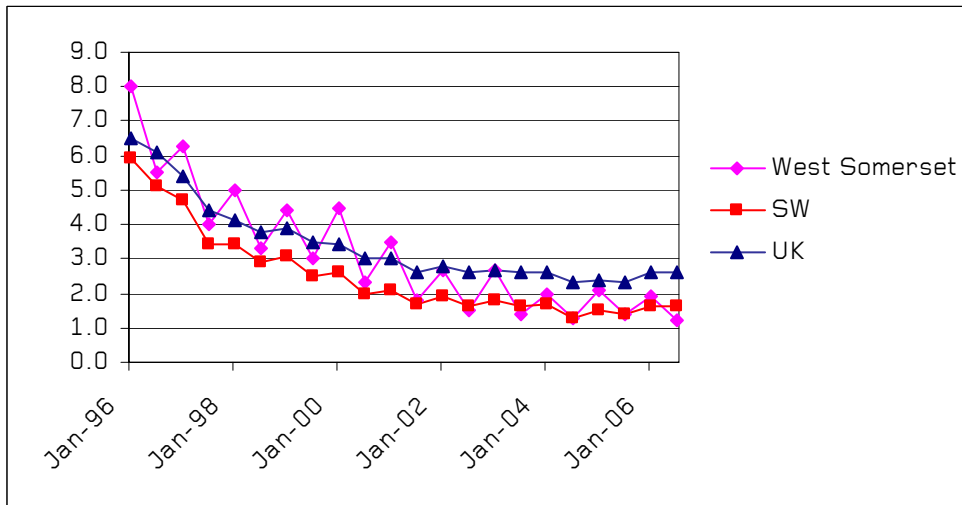
### Why does this matter?

This directly measures the number of people seeking work and claiming benefits. If your district shows a rate higher than average then job creation is worth thinking about in your plans.

### Figures for last three years

	Jan-03	Jul-03	Jan-04	Jul-04	Jan-05	Jul-05	Jan-06	Jul-06
West Somerset	2.7	1.4	2.0	1.3	2.1	1.4	1.9	1.2
SW	1.8	1.6	1.7	1.3	1.5	1.4	1.6	1.6
UK	2.7	2.6	2.6	2.3	2.4	2.3	2.6	2.6

### Graph showing last ten years' figures



In July 2006 there were 237 people in West Somerset receiving unemployment-related benefits.

### Source:

These figures are available [by reference to MCTA](#); [and on the web](#)

### Find out more?

The number of claimants is available down to the level of a ward (a market town may contain about four or five), but rates are difficult to establish. Contact MCTA for more.

## Economy – Gross Value Added per Head

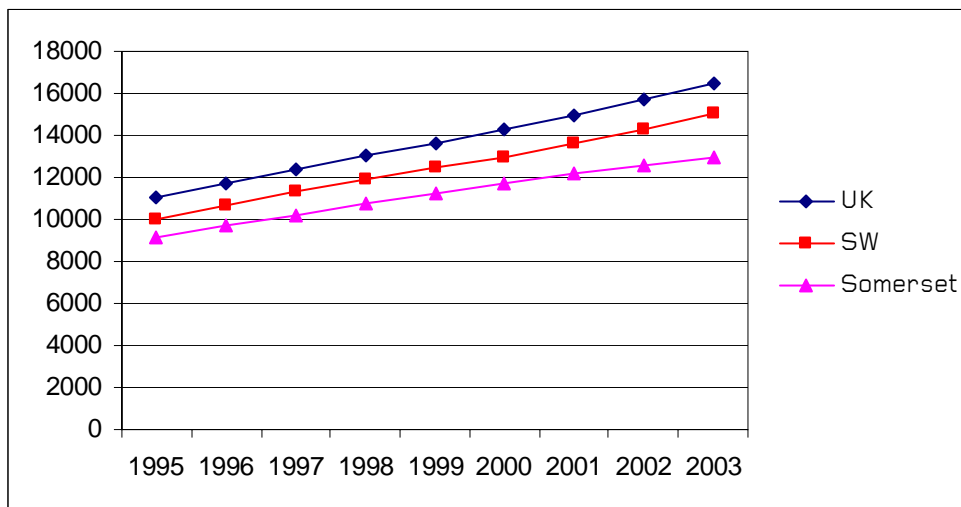
### Why does this matter?

GVA per head is the most basic measure of economic output, and so the prosperity of the local economy. It tends to be closely linked to wage rates. A weak economy is unlikely to generate wealth for the area, and if GVA is low business support or training needs thinking about.

### Headline gross value added (GVA) per head at current basic prices, £

	1995	1996	1997	1998	1999	2000	2001	2002	2003
UK	11,015	11,699	12,347	13,056	13,622	14,290	14,944	15,691	16,485
SW	9,966	10,669	11,295	11,949	12,455	12,957	13,621	14,312	15,019
Somerset	9188	9707	10155	10778	11225	11697	12230	12527	12997

### Headline gross value added (GVA) per head at current basic prices



### Source:

These figures are available [by reference to MCTA](#); [and on the web](#)

### Find out more?

GVA becomes meaningless for small areas, and the figures are for Somerset as a whole. Understanding business conditions at a town level may require local surveys. Contact [Business Link](#) or MCTA for more information.

## Economy – Vat Registrations and De-Registrations

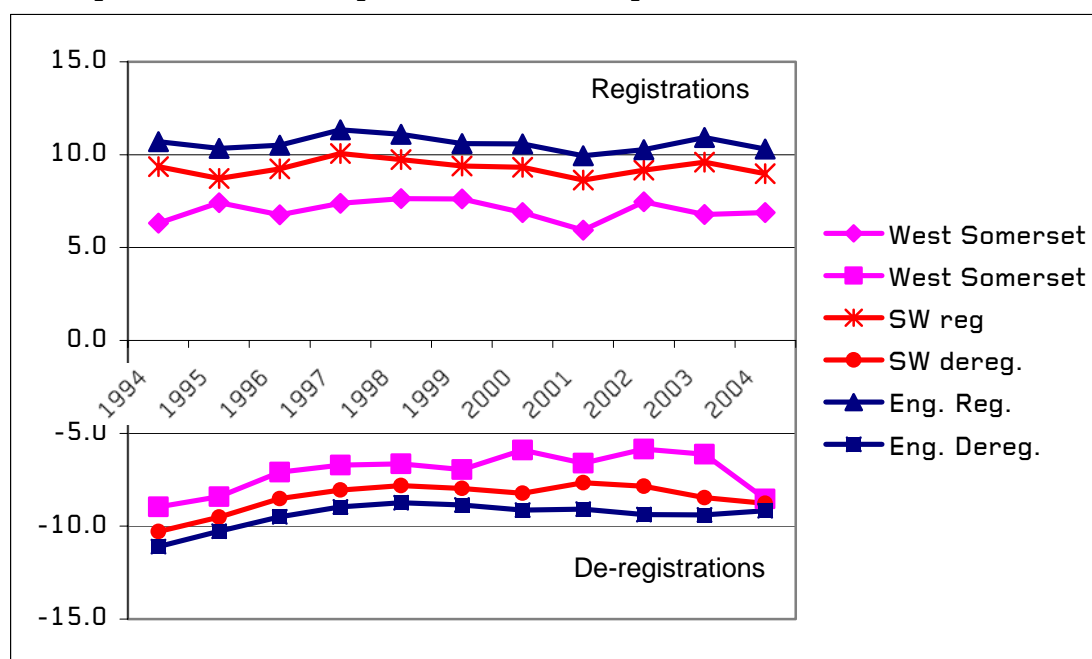
### Why does this matter?

This is the best available measure of business start up and closure, even though the smallest businesses, below the VAT threshold, are not included. If Start ups are below the average, this suggests that there is an opportunity to increase the rate of enterprise. See how far the creation of businesses is offset by closures, but the most dynamic areas often have many start ups and closures.

### VAT-registered business registrations and de-registrations as % of stock

	1994	1995	1996	1997	1998	1999	2000	2001	2002	2003	2004
West Somerset reg.	6.3	7.4	6.8	7.4	7.6	7.6	6.9	5.9	7.5	6.8	6.9
West Somerset dereg.	-9.0	-8.4	-7.1	-6.7	-6.6	-7.0	-5.9	-6.6	-5.8	-6.1	-8.5
<b>SW reg</b>	9.4	8.7	9.2	10.1	9.7	9.4	9.3	8.6	9.2	9.6	9.0
<b>SW dereg.</b>	-10.3	-9.5	-8.5	-8.0	-7.8	-8.0	-8.2	-7.7	-7.8	-8.5	-8.8
<b>Eng. Reg.</b>	10.7	10.3	10.5	11.3	11.1	10.6	10.6	9.9	10.3	10.9	10.3
<b>Eng. Dereg.</b>	-11.1	-10.3	-9.5	-9.0	-8.7	-8.9	-9.1	-9.1	-9.4	-9.4	-9.2

### VAT-registered business registrations and de-registrations as % of stock



### Source:

These figures are available [by reference to MCTA](#); and [on the web](#). De-registrations may also be the result of mergers.

### Find out more?

These figures are not available below the district level. You may find it useful to consult local chambers of trade or Business Link for more insight, or may need to undertake primary research.

## Economy – Net Change in Number of Businesses

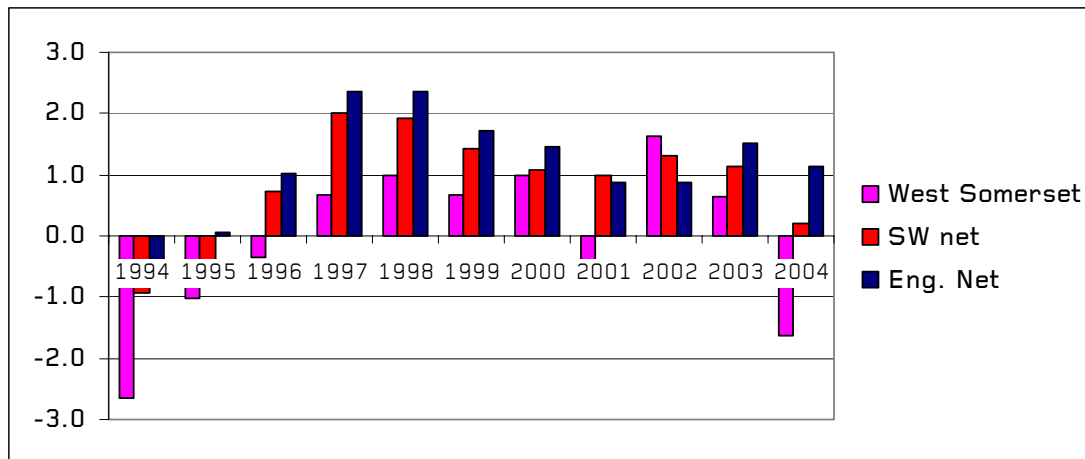
### Why does this matter?

Measuring the number of businesses gives an indication of the strength of the local economy. However, businesses are of different sizes and productivity, and some apparent closures may simply be mergers. This page should be read in conjunction with the figures on VAT start up and deregistration and survival, and interpreted with local knowledge.

### VAT-registered business net change as % of stock

	1994	1995	1996	1997	1998	1999	2000	2001	2002	2003	2004
West Somerset net	-2.7	-1.0	-0.3	0.7	1.0	0.7	1.0	-0.7	1.6	0.6	-1.6
SW net	-0.9	-0.8	0.7	2.0	1.9	1.4	1.1	1.0	1.3	1.1	0.2
Eng. Net	-0.4	0.1	1.0	2.4	2.4	1.7	1.4	0.9	0.9	1.5	1.1

### VAT-registered business net change as % of stock



### Source:

These figures are available [by reference to MCTA](#); and [on the web](#). They don't include small businesses below the VAT registration threshold.

### Find out more?

These figures are not available below the district level. You may find it useful to consult local chambers of trade or Business Link for more insight, or find local detail from the District Council's business registers. You may also need to undertake primary research.

## Economy – Business Survival Rates

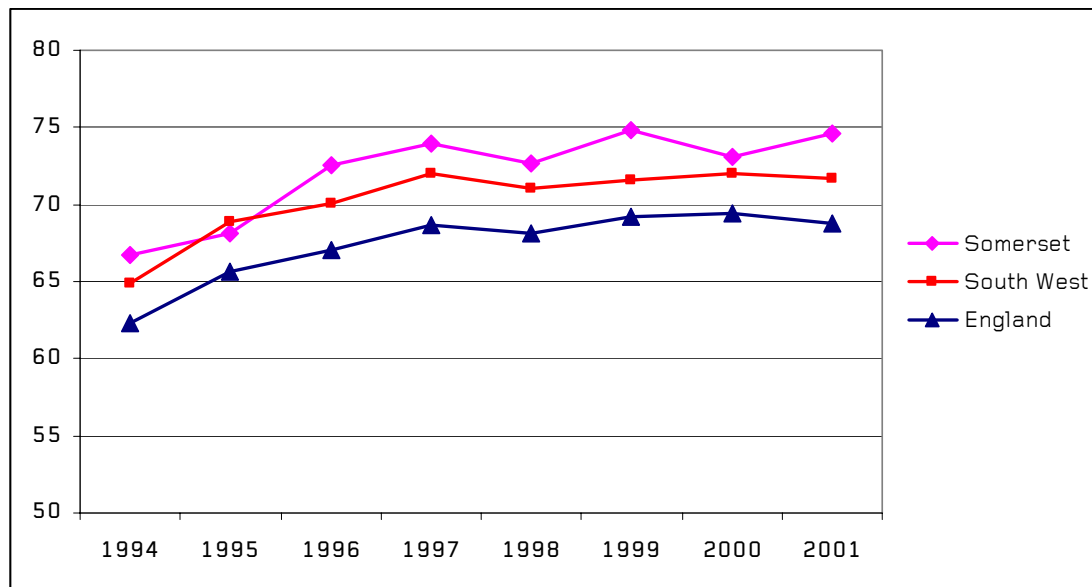
### Why does this matter?

Other things being equal it is beneficial to an economy and workforce that businesses survive. However, the most productive local economies often have a rapid turnover of companies, and an effective 'pruning' of the least efficient. These figures should be looked at in conjunction with those on business start-up and closure and overall stock.

### VAT-registered business survival after 3 years (% surviving)

Year of registration	1994	1995	1996	1997	1998	1999	2000	2001
Somerset	66.7	68.1	72.5	74	72.7	74.8	73.1	74.6
South West	64.9	68.9	70.1	72	71	71.6	72	71.7
England	62.3	65.6	67.1	68.7	68.1	69.2	69.4	68.8

### VAT-registered business survival after 3 years (% surviving)



### Source:

These figures are available [by reference to MCTA](#); [and on the web](#). They don't include small businesses below the VAT registration threshold. Other organisations use different sources to produce estimates of survival rates. For example, Barclay's Bank estimates survival by monitoring the openings and closures of business bank accounts.

### Find out more?

These figures are not published below the Business Link area level. You may find it useful to consult local chambers of trade or Business Link for more insight, or find local detail from the District Council's business registers. You may also need to undertake primary research.

## Economy – Wage rates

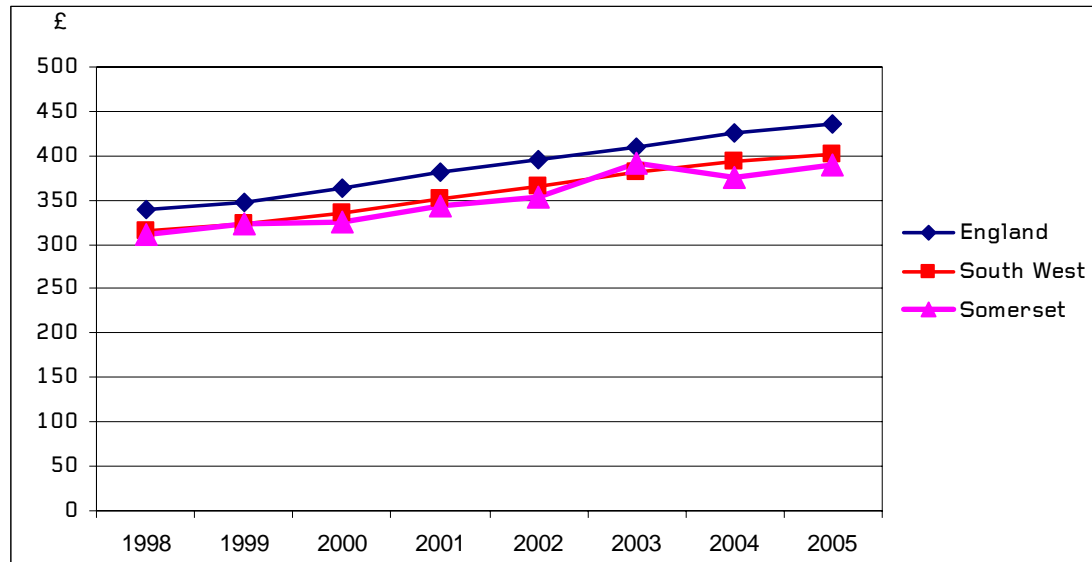
### Why does this matter?

The money that people take home from work is an important determinant of well-being, and a major contributor to the vibrancy of a local economy. Wages may be low as a reflection of the type of jobs people have, skill levels or the local rate for the same job.

### Gross median weekly pay

Area	1998	1999	2000	2001	2002	2003	2004	2005
Somerset	311.5	323.0	325.0	342.5	354.4	391.7	375.1	389.7
South West	314.8	323.9	336.0	352.3	364.9	382.0	392.9	401.0
England	339.4	347.8	364.4	381.7	396.5	410.6	425.4	436.3

### Gross median weekly pay for full-time workers



### Source:

These figures are available [by reference to MCTA](#); [and on the web](#). The small sample size means that figures are not available for West Somerset on its own, and here are replaced by those for Somerset as a whole; these figures have an average margin of error of about 4%.

### Find out more?

Figures are available for men and women, full and part time working and including or excluding bonuses. This extra information may help inform your response. It may be useful to compare these figures with the types of employment in your area.

## Economic – Employment Rates

### Why does this matter?

Employment is both a source of income and an important aspect of engagement in society. High employment rates are not necessarily an indicator of well being, as they may result from people working because they have to, even though they may have commitments of care, for instance.

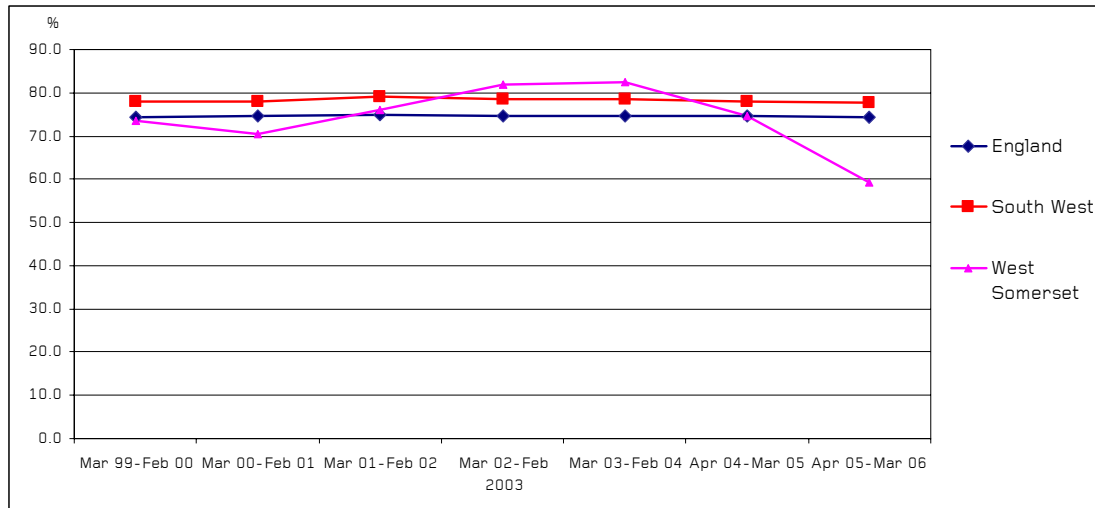
### Employment Rates

	Mar 99- Feb 00	Mar 00- Feb 01	Mar 01- Feb 02	Mar 02- Feb 2003	Mar 03- Feb 04	Apr 04- Mar 05	Apr 05- Mar 06
England	74.4	74.5	74.8	74.5	74.6	74.7	74.4
South West	78.1	78.1	79.0	78.5	78.6	77.9	77.6
West Somerset	73.6	70.4	76.1	82.0	82.4	74.6	59.3

Labour Force Survey

Annual Population Survey

### Employment Rates – working age population



### Source:

These figures are available [by reference to MCTA](#); [and on the web](#). The small sample size means that there may be about a 10% error in the figures for West Somerset.

### Find out more?

Figures are available for age, gender, ethnicity and occupation, but the small numbers in each group when the sample is broken down further means that the figures become less reliable when used this way.

## Economic – Long term unemployment

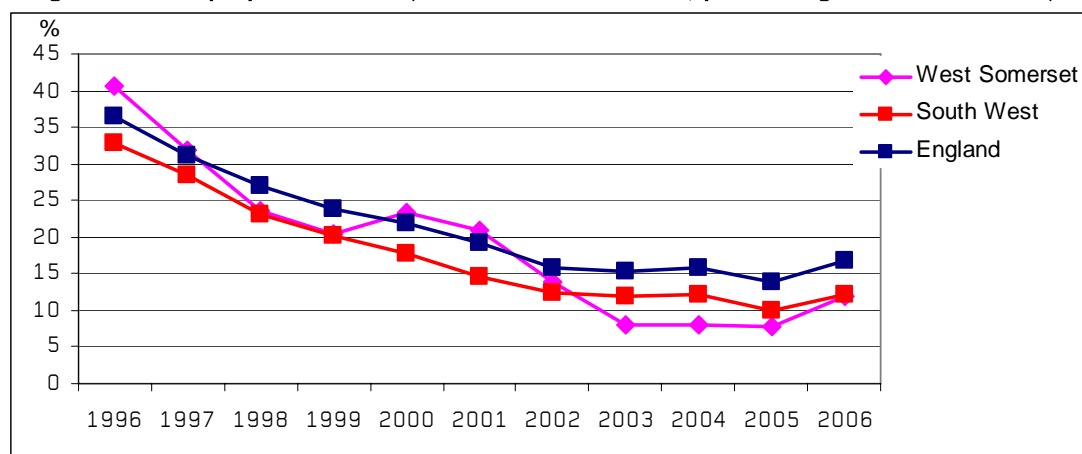
### Why does this matter?

Long term unemployment is a problem for those who experience it, but is also an indicator of the nature of the local labour market. A high proportion of long term unemployed may indicate that only the least employable people remain out of work, and that skills levels may need addressing. This element should be compared to the total number of unemployed claimants.

### Long term unemployment rates (more than 12 months, percentage of all claimants)

Date	1996	1997	1998	1999	2000	2001	2002	2003	2004	2005	2006
West Somerset	41	32	24	20	23	21	14	8	8	8	12
South West	33	28	23	20	18	15	12	12	12	10	12
England	36	31	27	24	22	19	16	15	16	14	17

### Long term unemployment rates (more than 12 months, percentage of all claimants)



### Source:

These figures are available [by reference to MCTA](#); [and on the web](#).

### Find out more?

Much more detail of gender, duration of unemployment and normal occupation is available for claimants. However, not all people who are potentially looking for work claim benefits.

## Social – GCSE Results at age 15

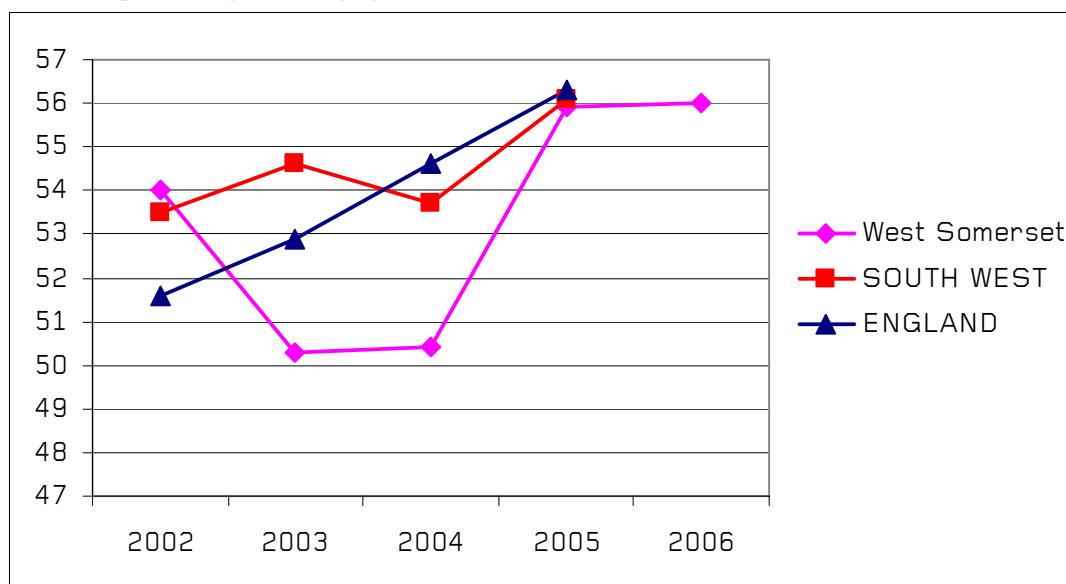
### Why does this matter?

GCSE results are important for those who take them, but also help give a picture of the district. These results are for the schools in the area (rather than residents). They may reflect, amongst other things, the prosperity of the intake and the quality of education. Perception of schools' quality is an important factor affecting the attractiveness of an area to parents.

### Percentage of 15 year old pupils with more 5 or more GCSEs, A\*-C

	Aug-2002	Aug-2003	Aug-2004	Aug-2005	Aug 2006 (provisional)
West Somerset	54	50.3	50.4	55.9	56.0
SOUTH WEST	53.5	54.6	53.7	56.1	n.a
ENGLAND	51.6	52.9	54.6	56.3	n.a.

### Percentage of 15 year old pupils with more 5 or more GCSEs, A\*-C



### Source:

These figures are available [by reference to MCTA](#); [and on the web](#).

### Find out more?

Information for individual schools is available from the DfES, with detailed breakdown by gender, subjects and for different Key Stages. More detailed information may be available – subject to rules on data protection and disclosure – from the Local Education Authority at the County Council.

## Social – Workforce with qualifications at Level 2 or above

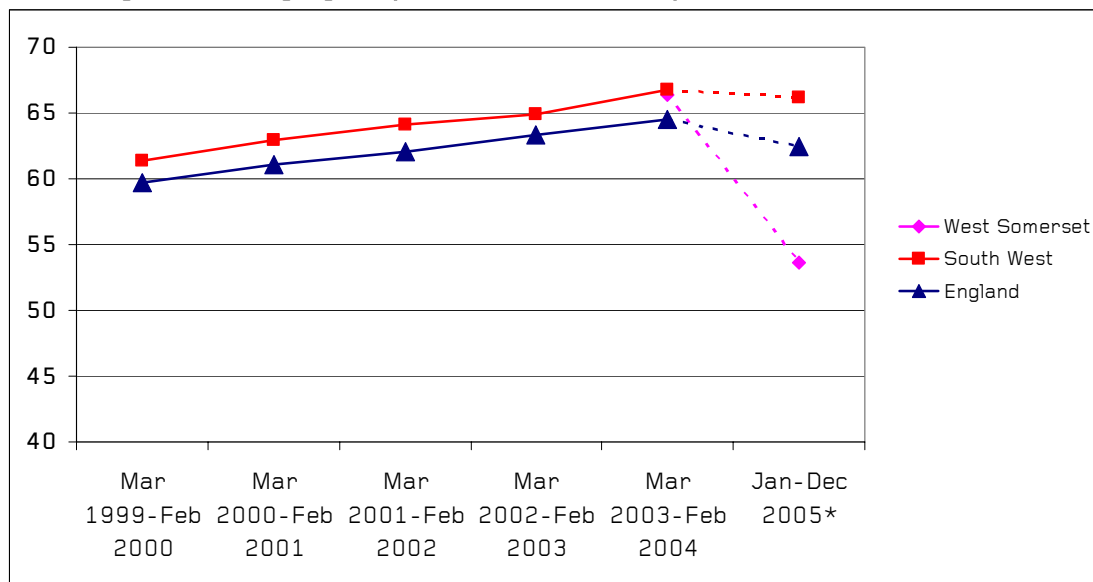
### Why does this matter?

Qualification at 'Level 2', meaning 5 or more GCSEs at A\*-C, in the workforce gives a picture of the labour market for new businesses to set up or existing ones to expand. It also indicates the competitiveness of the local labour force.

### Percentage of Working Age Population with Level 2 qualification or above

	Mar 1999- Feb 2000	Mar 2000- Feb 2001	Mar 2001- Feb 2002	Mar 2002- Feb 2003	Mar 2003- Feb 2004	Jan-Dec 2005*
West Somerset	n.a.	n.a.	n.a.	n.a.	66.4	53.6
South West	61.4	62.9	64.1	64.9	66.8	66.2
England	59.7	61.1	62.1	63.3	64.5	62.5

### Percentage of Working Age Population with Level 2 qualification or above



\* Annual Population Survey figures based on calendar year

### Source:

These figures are available [by reference to MCTA](#); [and on the web](#). Most data are from the Labour Force Survey, but for 2005 are from the Annual Population Survey. The two can be compared directly, although the reporting dates are a little different. The national and regional figures are reliable to within less than one percentage point, but the smaller sample size at a district level means that the few West Somerset figures may be four or five percent out.

### Find out more?

The Labour Force Survey and its successor, the Annual Population Survey, give much information about qualifications and characteristics of the workforce, based on a survey of households.

## Social – Total crime

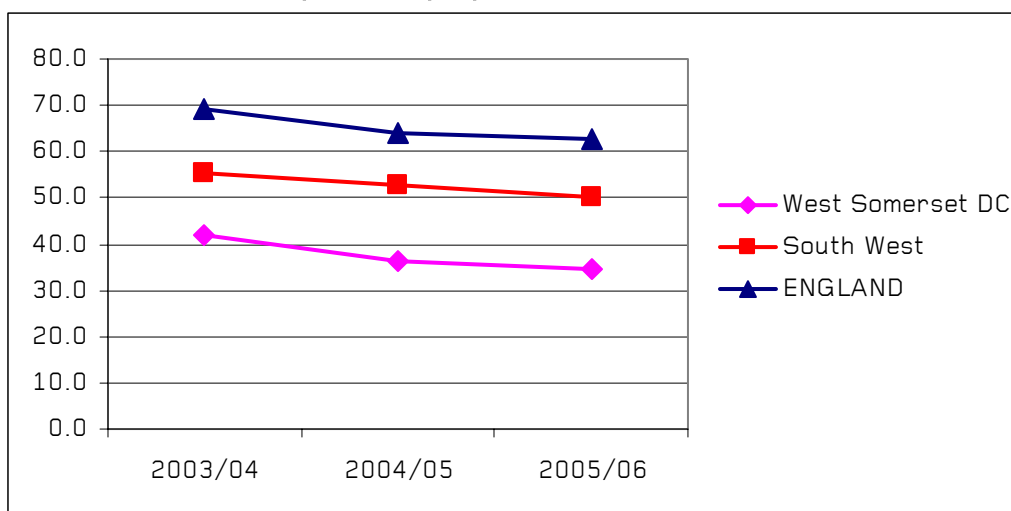
### Why does this matter?

Crime is of public concern, often out of all proportion to levels or trends, and those most concerned, such as older people, are often amongst those least likely to be victims of crime. Nevertheless, fear of crime can be a serious problem in its own right.

### Total number of crimes per 1000 people

Name	2003/04	2004/05	2005/06
West Somerset	42.0	36.4	34.6
South West	55.2	52.7	50.2
ENGLAND	69.3	64.0	62.7

### Total number of crimes per 1000 people



### Source:

These figures are from the Home Office records of crime and the British Crime Survey and are available [by reference to MCTA](#); [and on the web](#).

### Find out more?

Local Crime and Disorder Partnerships gather information from different local sources, notably the Police but also local authorities and health, to give a detailed but wide-ranging picture of crime. They will often be able to pick out crime 'hot spots'. Some of this information is confidential, but if crime prevention or the reduction of fear of crime is of particular concern to you, contact your local district council for more information and advice.

## Social – Burglary

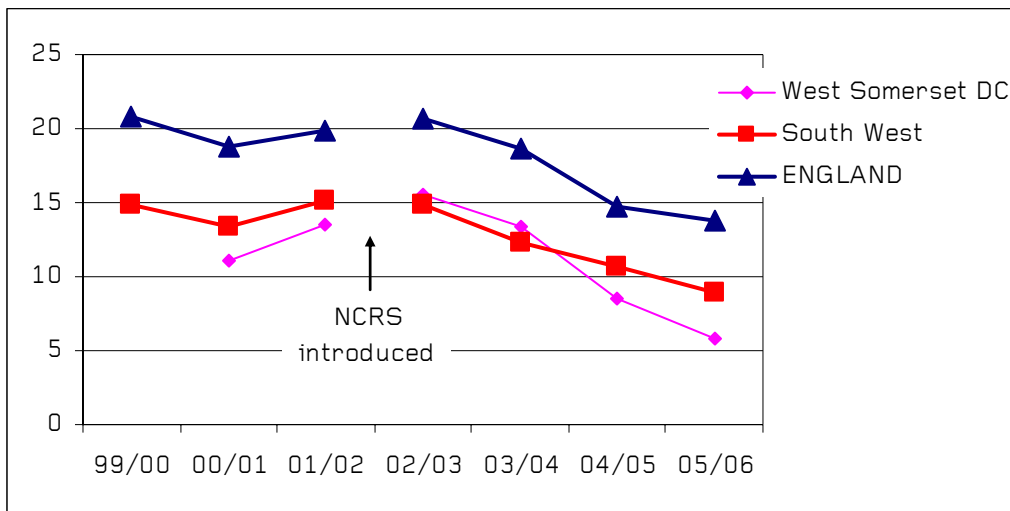
### Why does this matter?

Burglary is a relatively common crime, but one with personal as well as financial impacts. It is also one where action by individuals and communities can help reduce the incidence.

### Burglaries per 1000 people

Name	99/00	00/01	01/02	02/03	03/04	04/05	05/06
West Somerset	11.1	13.5	15.6	13.4	8.5	5.8	5.6
South West	14.8	13.4	15.2	14.8	12.3	10.7	8.9
ENGLAND	20.8	18.8	19.9	20.7	18.6	14.7	13.8

### Total number of crimes per 1000 people



### Source:

These figures are from the Home Office records of crime and are available [by reference to MCTA; and on the web](#). The introduction of the National Crime Recording Scheme in 2002 means that the earlier figures cannot be directly compared. The impact of the NCRS is thought to have been a rise of about 10% in the number of offences recorded.

### Find out more?

Local Crime and Disorder Partnerships gather information from different local sources, notably the Police, on the subject of burglary. They will often be able to pick out 'hot spots'. Some of the detailed information will be kept confidential to protect privacy, but the Police and Neighbourhood Watch will be able to provide support and advice in community action to reduce burglary.

## Social – Car Accidents

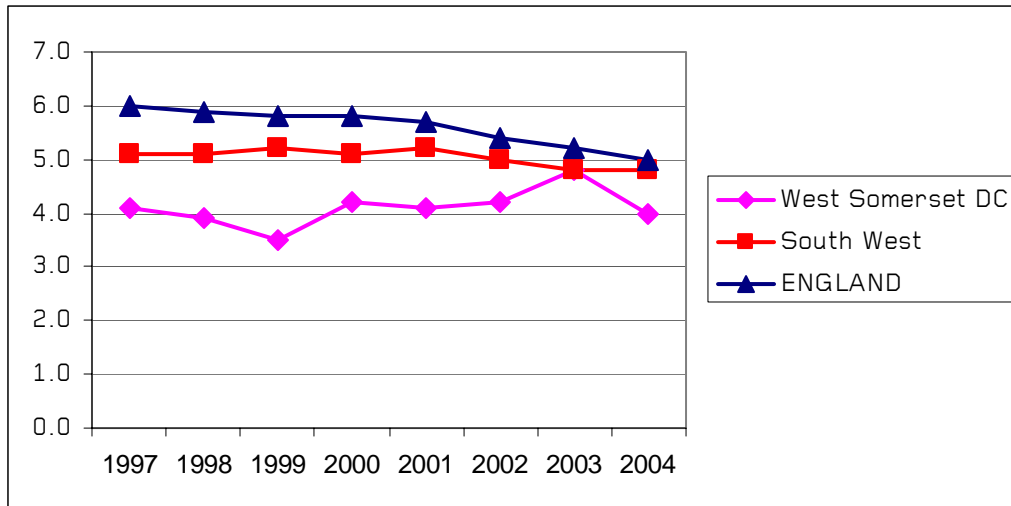
### Why does this matter?

Road traffic accidents rates in England have been slowly, but steadily, falling. Locally individual accidents may result from a number of factors, but a high rate indicates that attention may need to be given to the design of roads in towns or the need to travel by road. Disadvantaged areas typically have high road casualty rates.

### Overall road accident casualty rate: all people, all severities per 1,000 population

Name	1997	1998	1999	2000	2001	2002	2003	2004
West Somerset	4.1	3.9	3.5	4.2	4.1	4.2	4.8	4.0
South West	5.1	5.1	5.2	5.1	5.2	5.0	4.8	4.8
ENGLAND	6.0	5.9	5.8	5.8	5.7	5.4	5.2	5.0

### Overall road accident casualty rate: all people, all severities per 1,000 population



### Source:

These figures are from the Department of Transport and are available [by reference to MCTA; and on the web](#)

### Find out more?

Reducing Road Traffic Accidents is a significant aim of Local Transport Plans. To find out more contact the County Council Highways department.

## Social – Male Life Expectancy at Birth

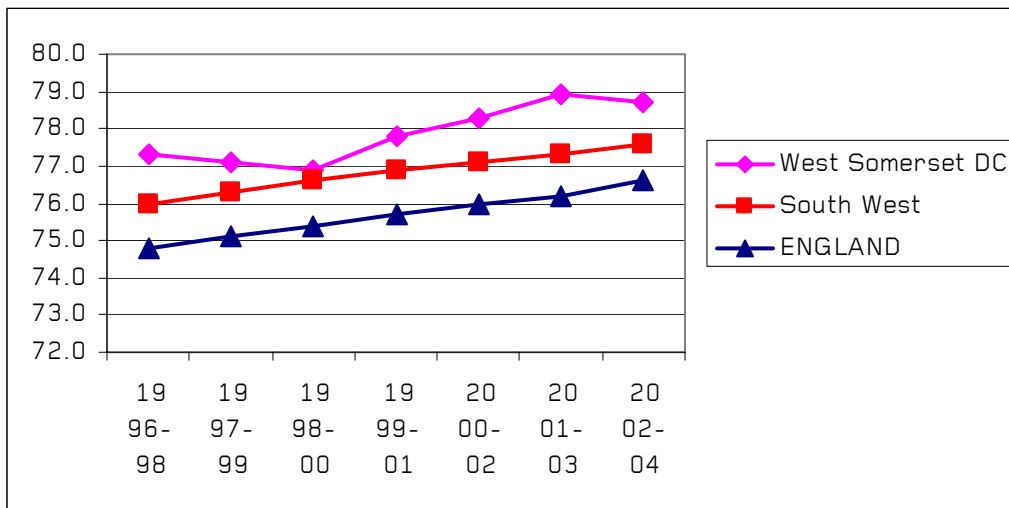
### Why does this matter?

Life expectancy is probably the most fundamental measure of well-being. It is affected by numerous factors, including access to hospital care for infants, prosperity and lifestyle. A low life expectancy in an area is a strong indicator of need; other areas may be concerned if they do not share in the steady increase in life expectancy nationally. Figures are separated into males and females.

### Male life expectancy at birth (years; 3 year rolling average)

Name	1996-98	1997-99	1998-00	1999-01	2000-02	2001-03	2002-04
West Somerset	77.3	77.1	76.9	77.8	78.3	78.9	78.7
South West	76.0	76.3	76.6	76.9	77.1	77.3	77.6
ENGLAND	74.8	75.1	75.4	75.7	76.0	76.2	76.6

### Male life expectancy at birth (years; three year rolling average)



### Source:

These figures are from the Department of Health and are available [by reference to MCTA; and on the web.](#)

### Find out more?

Whilst life expectancy is an excellent broad indicator, any intervention needs to be based on a detailed understanding of the factors. An excellent starting place is the South West Public Health Observatory's [area profiles](#). You may then find it useful to contact the local Primary Care Trust for more information and advice.

## Social – Female Life Expectancy at Birth

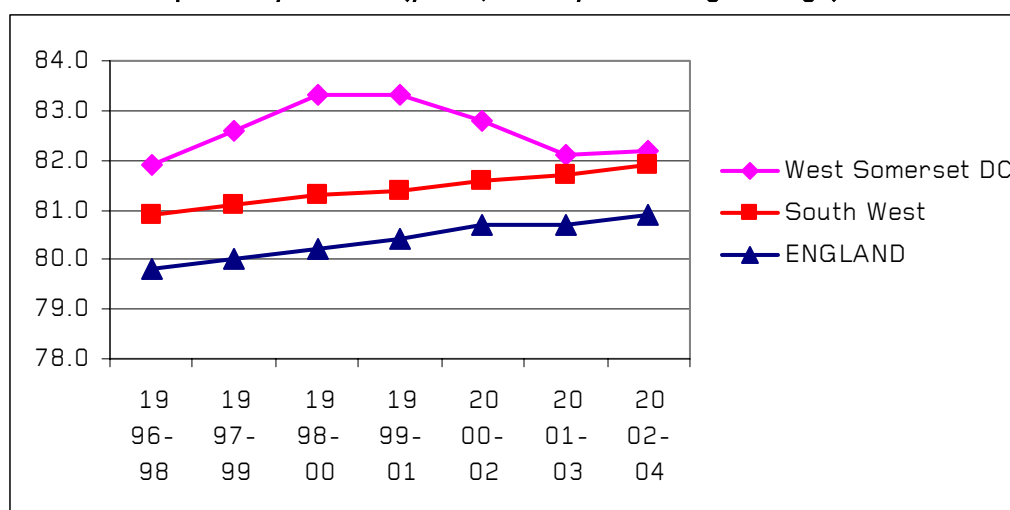
### Why does this matter?

Life expectancy is probably the most fundamental measure of well-being. It is affected by numerous factors, including access to hospital care for infants, prosperity and lifestyle. A low life expectancy in an area is a strong indicator of need; other areas may be concerned if they do not share in the steady increase in life expectancy nationally. Figures are separated into males and females.

### Female life expectancy at birth (years; 3 year rolling average)

Name	1996-98	1997-99	1998-00	1999-01	2000-02	2001-03	2002-04
West Somerset	81.9	82.6	83.3	83.3	82.8	82.1	82.2
South West	80.9	81.1	81.3	81.4	81.6	81.7	81.9
ENGLAND	79.8	80.0	80.2	80.4	80.7	80.7	80.9

### Female life expectancy at birth (years; three year rolling average)



### Source:

These figures are from the Department of Health and are available [by reference to MCTA; and on the web.](#)

### Find out more?

Whilst life expectancy is an excellent broad indicator, any intervention needs to be based on a detailed understanding of the factors. An excellent starting place is the South West Public Health Observatory's [area profiles](#). You may then find it useful to contact the local Primary Care Trust for more information and advice.

## Social – Teenage Conceptions (15-17 year olds)

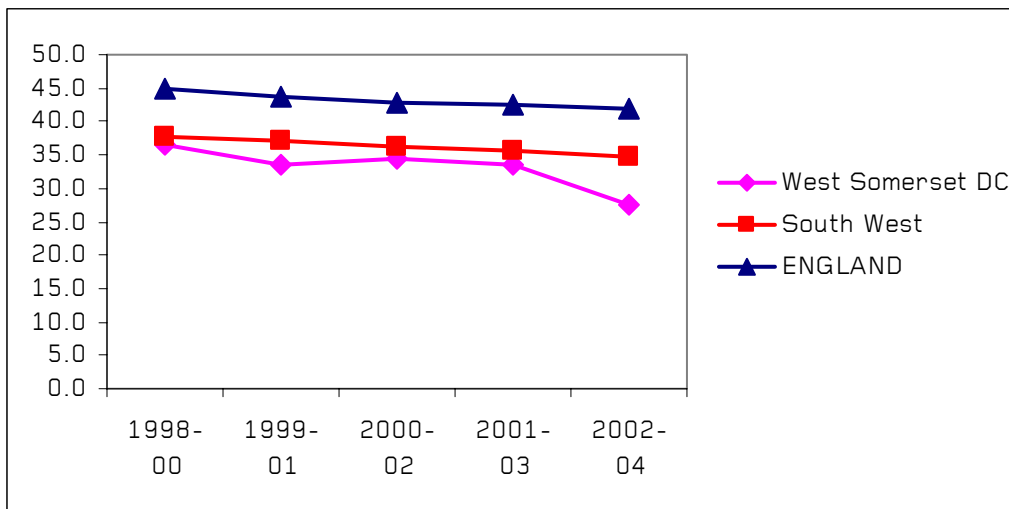
### Why does this matter?

'Teenage' conceptions are often an indicator of deprivation. In particular they may act as a measure of social exclusion in the young.

### Conception rate of under 18 year olds (per 1,000 15-17 year olds; 3 year rolling average)

Name	1998-00	1999-01	2000-02	2001-03	2002-04
West Somerset DC	36.5	33.5	34.5	33.5	27.6
South West	37.7	37.0	36.2	35.5	34.6
ENGLAND	45.0	43.6	42.9	42.4	42.0

### Conception rate of under 18 year olds (per 1,000 15-17 year olds; 3 year rolling average)



### Source:

These figures are from the Department of Health and are available [by reference to MCTA; and on the web.](#)

### Find out more?

Teenage conception rates often involve small numbers of people and detailed analysis can be difficult. The [South West Public Health Observatory](#) leads on sexual health for all the regions in England, and is a valuable source of information and advice.

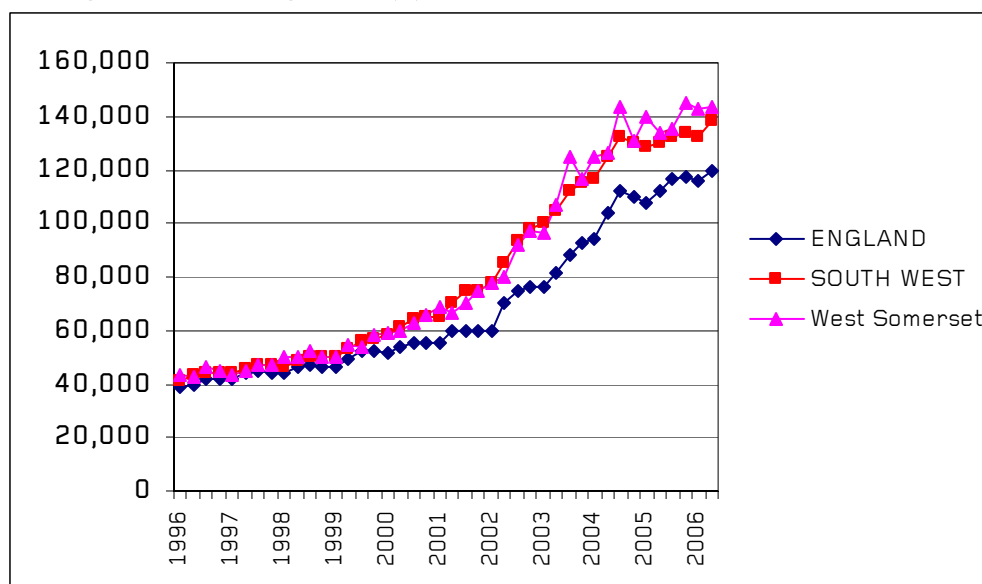
## Society – House Prices – lower quartile

### Why does this matter?

Housing is a key rural issue, with the ability of first time buyers and 'key workers' to get on the housing ladder of particular concern. The lower quartile gives a house price where 25% of the housing is cheaper, and 75% is more expensive, which suggests the price of dwelling these groups might want to buy. If the lower quartile price is high then there may be a need for more affordable housing in the town.

	1996	1997	1998	1999	2000	2001	2002	2003	2004	2005	2006
<b>ENGLAND</b>	40,000	43,950	46,000	49,500	54,000	59,950	69,950	81,500	104,000	112,500	120,000
<b>SOUTH WEST</b>	43,000	45,500	48,950	53,250	61,000	70,000	85,000	105,000	125,000	130,000	138,000
West Somerset	42,500	45,000	49,875	54,875	59,950	66,500	79,963	106,932	126,500	133,625	143,563

House prices – lower quartile (£)



### Source:

These figures are available [by reference to MCTA](#); and on the web

### Find out more?

Average house prices are affected by a range of factors, including the mix of housing in the area, but are available to a detailed scale from the Land Registry. It is important to compare these figures with average wages in the area, as can be seen on the earnings and housing affordability pages.

## Society – Population Age Structure Projections

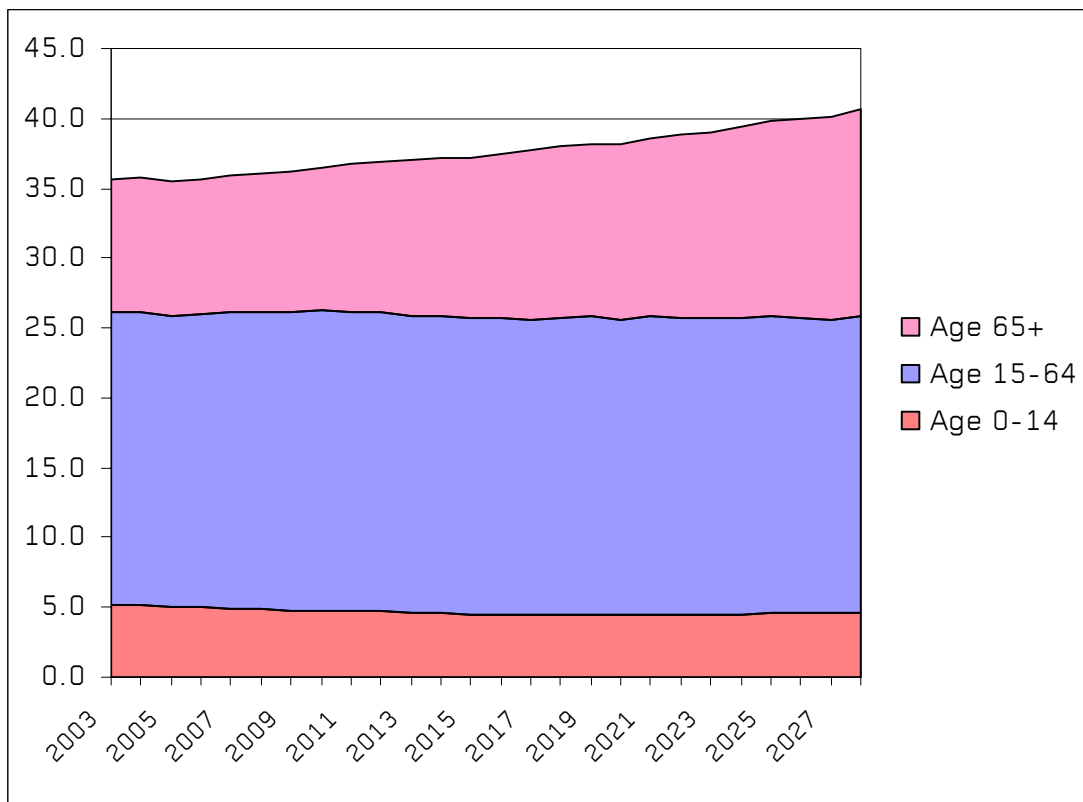
### Why does this matter?

Making plans for the future population needs to be done with evidence about the likely changes over time. An increase in the numbers of older or younger people may mean a greater demand for services of particular interest to them.

### 2004 based Population Projections, West Somerset District, Thousands of people

	2009	2014	2019	2024	2029
Age 0-14	4.9	4.7	4.5	4.5	4.6
Age 15-64	21.2	21.4	21.1	21.2	21.0
Age 65+	9.8	10.8	12.1	13.2	14.5

### Changing Age Structure of the Population – 2004-based Projections



### Source:

These figures are available [by reference to MCTA](#); [and on the web](#)

### Find out more?

Population projections are usually quite robust at the district scale, but are less reliable for towns, where individual housing developments can have a strong local effect. If you need information about housing development in your town contact the District Council Development Control office, or MCTA.

## Society – Population Projections

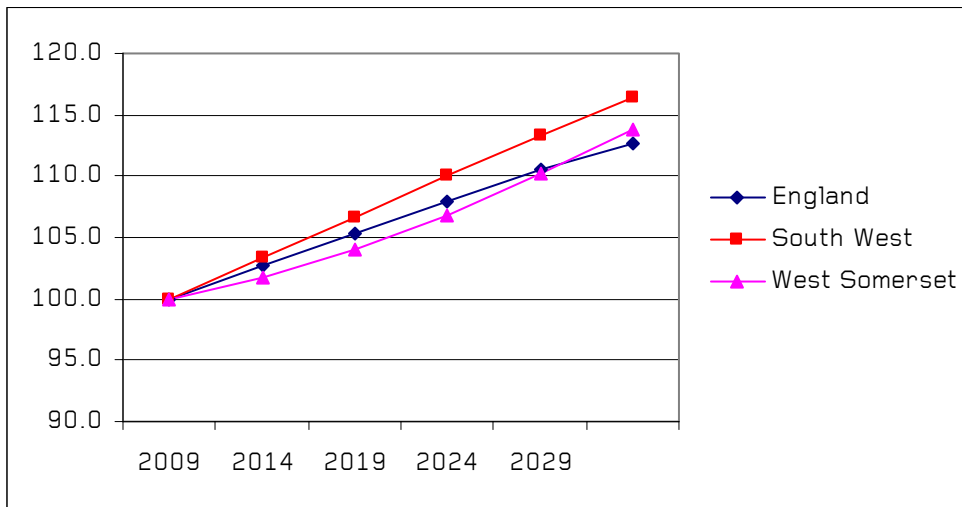
### Why does this matter?

All rural districts in the South West are set to increase in population if present trends continue. Those areas that are growing the fastest will need to make extra provision, but also have the opportunity to develop new services and facilities.

### 2004 based Population Projections, Indexed to 2004=100

	2004	2009	2014	2019	2024	2029
England	100.0	102.7	105.3	108.0	110.5	112.7
South West	100.0	103.4	106.6	110.0	113.4	116.4
West Somerset	100.0	101.7	103.9	106.8	110.1	113.8

### Population growth – 2004-based Projections



### Source:

These figures are available [by reference to MCTA](#); [and on the web](#)

### Find out more?

Population projections are usually quite robust at the district scale, but are less reliable for towns, where individual housing developments can have a strong local effect. If you need information about housing development in your town contact the District Council Development Control office, or MCTA.

## Environment – Parks and Open Spaces

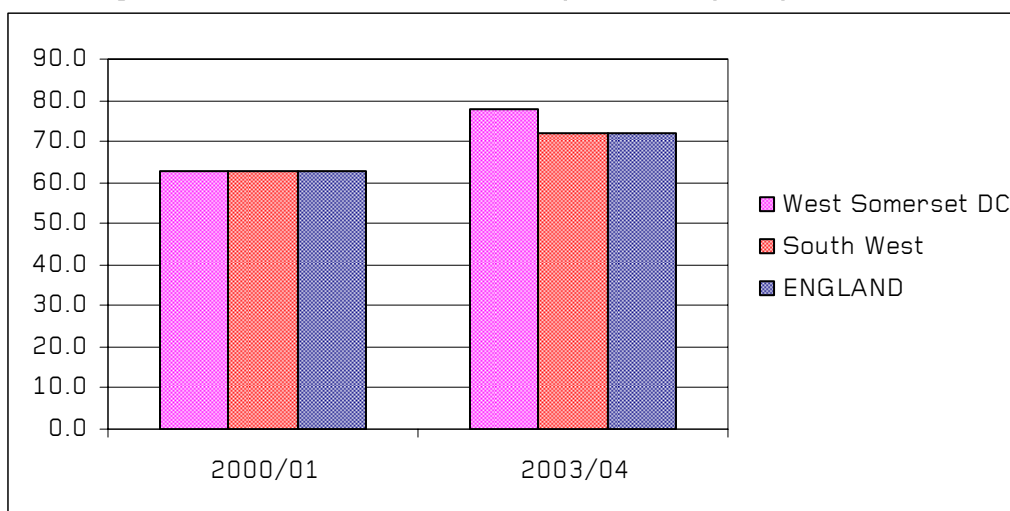
### Why does this matter?

Green spaces can be taken for granted in rural areas, but open land may not be accessible or suitable for recreation. It can be an important influence on how much exercise people take, and therefore their health, and is also an important element of how an area is perceived.

### Percentage of residents satisfied with local parks and open spaces

Name	2000/01	2003/04
West Somerset	63.0	78.0
South West	63.0	72.0
ENGLAND	63.0	72.0

### Percentage of residents satisfied with local parks and open spaces



### Source:

This Best Value Performance Indicator collected every three years. The figures are collected in Local Authorities' surveys, collated by DCLG and are available [by reference to MCTA; and on the web.](#)

### Find out more?

The robustness of the figures at levels below the district will depend upon the sample size in each case. It may be possible to roll the two surveys together to produce more detail about an area, whilst losing the trend data. For more information contact your district council. It may also be useful to compare these figures with the percentage development on brown field land.

## Environmental – Housing on Brownfield Site (‘Previously Developed Land’)

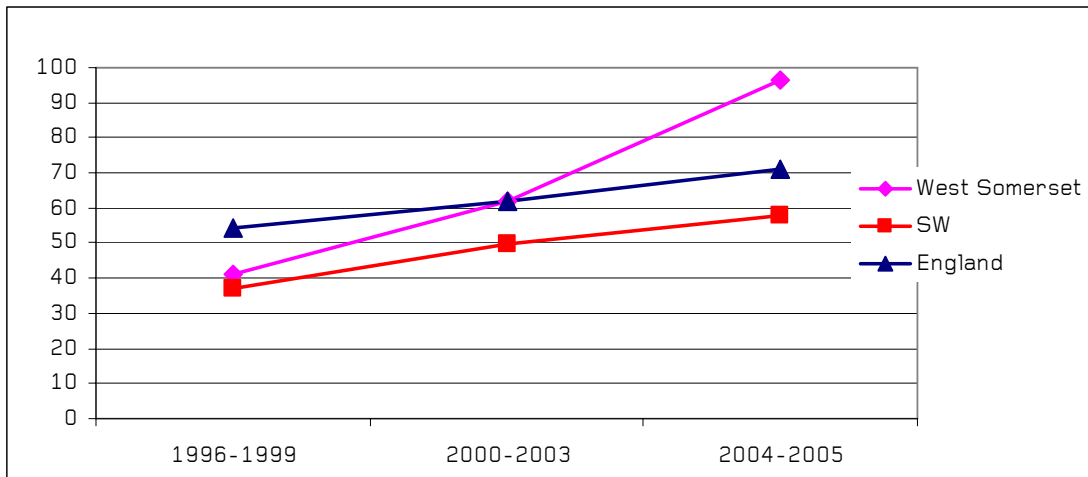
### Why does this matter?

Many rural dwellers are concerned about the loss of greenfield sites to development, and national policy has been to encourage housing on old industrial or other previously used sites, usually in towns. More recently, some have pointed out the value of some ‘brownfield sites’ for their biodiversity or heritage, so each site needs careful consideration.

### 2004 based Population Projections, Indexed to 2004=100

Region/County/Local Authority	1996-1999	2000-2003	2004-2005
West Somerset	41	62	97
SW	37	50	58
England	54.5	62	71

### Housing Development on Brownfield Land



### Source:

These figures are available [by reference to MCTA](#); [and on the web](#). The 2004-05 figure for West Somerset is from the South West Regional Assembly.

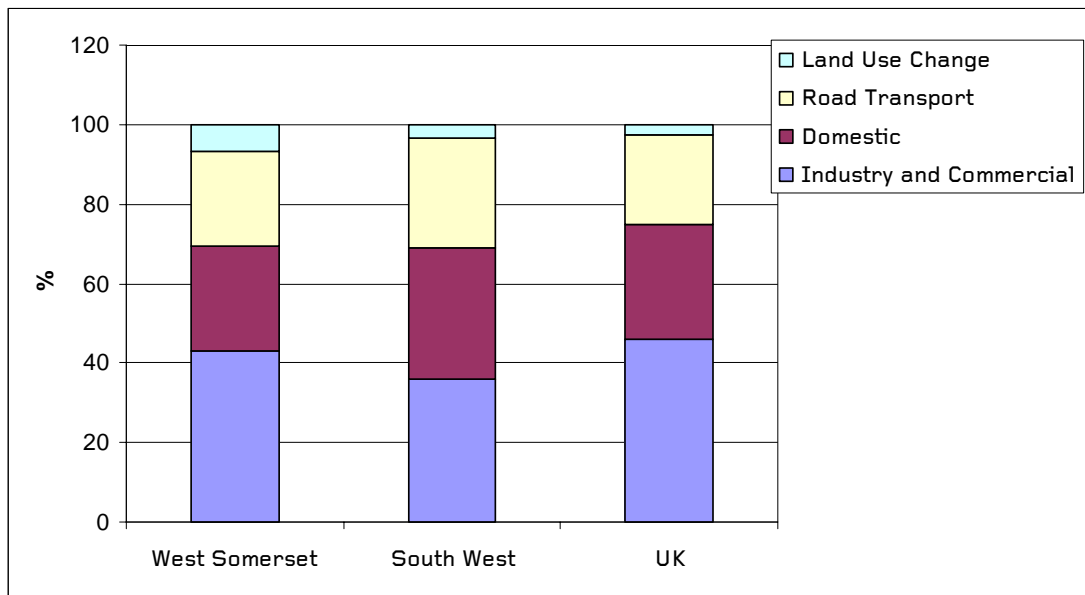
### Find out more?

## Environment - Carbon emissions

### Why does this matter?

Emission of carbon per head is a good indicator of contribution to the greenhouse effect and so climate change.

Area	Industry and Commercial	Domestic	Road Transport	Land Use Change	Total	Population Thousands <sup>(1)</sup>	Per capita CO2 (tonnes)	Domestic per capita CO2 (tonnes)
West Somerset	163	101	90	26	379	36	10.7	2.8
TOTAL SOUTH WEST	14793	13442	11262	1475	40972	4999	8.2	2.7
UK TOTAL	262087	163737	128606	13676	568105	59537	9.5	2.8



### Source:

These figures are calculated by Defra, and the raw data area available [by reference to MCTA; and on the web](#)

### Find out more?

These figures are not available in this form at a lower geographical resolution. If you want to find out about carbon in your town you may have to undertake primary research. Contact MCTA for more.

### Take Action?

Climate change is the most serious problem facing the planet. Even if your district comes out well compared to the national picture, it is still almost certainly producing CO<sub>2</sub> at an unsustainable rate.

## Environmental – Recycling Rates for Household Waste

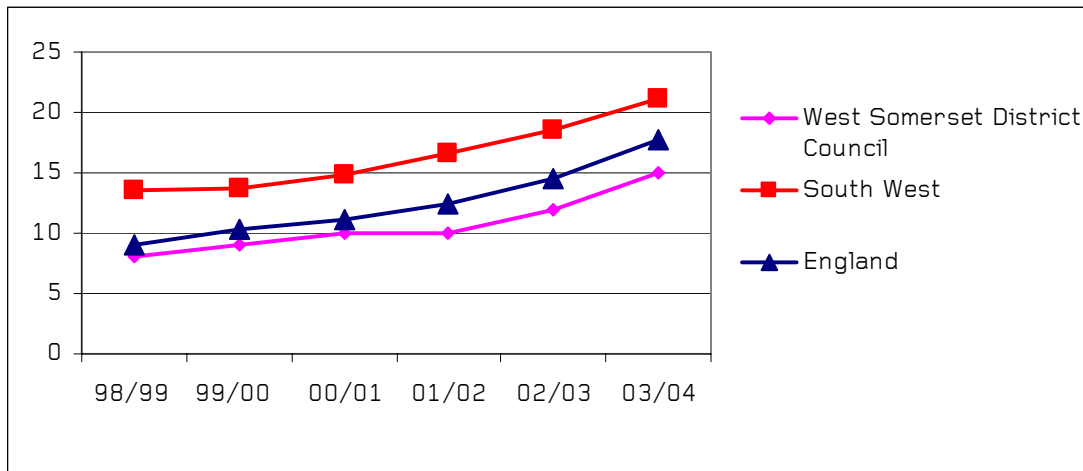
### Why does this matter?

Recycling rates indicate a component of an area's ecological footprint, and may suggest areas for improvement.

### Local Authority Household Waste Recycling (including composting)

	98/99	99/00	00/01	01/02	02/03	03/04
West Somerset District Council	8	9	10	10	12	15
<b>South West</b>	13.6	13.7	14.9	16.6	18.6	21.2
<b>England</b>	9.0	10.3	11.2	12.5	14.5	17.7

### Local Authority Household Waste Recycling (including composting)



### Source:

The figures are provided by Defra on the basis of surveys of Local Authorities. They represent the proportion of waste collected by Local Authorities that are recycled or composted: the proportion may be reduced if households have a high rate of composting green waste at home. The figures are available [by reference to MCTA and on the web](#)

### Find out more?

Collection of waste is the responsibility of the District Council, whereas its disposal and recycling is the responsibility of the County Council. Both may be able to provide more information and guidance.